



**THEME**

Experience Delight !

## **Theme Logistics & Management Pvt Ltd**

308, Ocean, Near Centre Square Mall, Vikram Sarabhai Marg,  
VADODARA-390 003. Gujarat, India. Ph. : 0265-2311428

Email : [info@themelogistics.com](mailto:info@themelogistics.com)

Website : [www.themelogistics.com](http://www.themelogistics.com)

Corporate  
**Profile**

# Synopsis

## 1. Brief History

- a. A Multimodal Logistics company of over 20 Years Experience
- b. Kailash Bulk a proprietary company to Thema Logistics and Management Pvt Ltd Company
- c. A humble group of over 150 Cr Turn Over and handling of over 9 Million MT in 2020-21
- d. From asset lean to asset rich company having its own 150 Tippers, 45 Excavators and Loaders, 30 Bus and over 200 People on payroll.
- e. Sustainable growth and customer base of Reliance Industries, Kribhco, AMNS, JSW Port, Pipavav Port and many traders and end users.
- f. Diversifications
  - i. Thema Nutriment and Packaging- Facility at Dahej SEZ, manufacturing of small and FIBC woven sacs
  - ii. Thema Infra- Developers of Bungalow Scheme in Vadodara
  - iii. Thema Food- Old School Prime Dine Restaurants in Vadodara, Ahmedabad and Africa.
  - iv. Staff Transportation: Busses are provided for employee transportation at SRF LIMITED Company.

## 2. Important Milestones

- a. Transport and Handling Contractor in Gujarat Ports since 2000-01
- b. Stevedore and end to end Port handling contract with Pipavav Port in 2008-09
- c. Joined Hands with Kribhco Infrastructure Limited in 2013-14 to develop Rail Terminal at Hazira for Dry Bulk and Break Bulk Cargo
- d. Started association with Reliance Industries at Hazira and Dahej for Coal Handling since 2015-16
- e. Marketed and commenced third party cargo handling at Kribhco Jetty at Hazira in 2017-18 (Integrated Sea and Rail Operations at Hazira)
- f. Started association with JSW Jaigarh Port for handling end to end third party cargo since 2018-19
- g. Started association with Reliance Industries, Jamnagar facility to handle Coal and Pet Coke since 2018-19
- h. Started association with Arcelor Mittal Nippon Steel, Hazira for Raw Material handling since 2020-21

## 3. Short Term Goal- Horizon Six Months Time (By October 2021)

- a. To develop Kribhco, Hazira Facility.
- b. To own at least Five sea going barges of DWT 2000 to 2200 MT
- c. To own Five Barge Unloaders of Mix of Tata make and also Liebherr cranes from Europe
- d. To develop coal and cargo storage yard of at least 7 Hectares to handle over 2.0 Million MT of cargo per year.
- e. To add 10 Tippers and 5 Excavators and Loaders in the existing Fleet
- f. To add employment of over 80 personnel on Payroll
- g. Projected outlay of INR 35 Cr.
- h. Projected revenue of INR 150 Cr in FY 2022-23, INR 175 CR in FY 2023-24 and INR 200 Cr in FY 2024-25

## 4. Medium Term Goal- Horizon 3 Years, ending March 2024.

- a. Construction and Expansion of Kribhco Jetty, waterfront by 150 Mtrs.
- b. Construction of Drydock and Barge Repair Facility
- c. Addition of Sea Going Barges, barge Unloader Cranes, Tippers, Excavators and Loaders
- d. Addition of 10 Hectares of Storage yard for cargo to handle over 6 Million MT.
- e. New clinker grinding unit to manufacture Cement including Slag Cement and Pozzolana Cement of capacity of 1 Million MT per annum
- f. Setting up Smart Petrol Pump with future electric charging units ready and also Entertainment Zone
- g. Projected outlay of INR 550 Cr.
- h. Projected Revenue of INR 500 Cr from FY 2025-26

## 5. Long Term Goal – Horizon 6 Years, ending March 2027

- a. Vegetable Oil packaging and distribution facility of 0.5 Million MT Per Year.
- b. Multi User Food Processing Industry
- c. Multi user packaging industry from sachets to tetra pack to drums and pallets.
- d. Logistics park with warehousing facility
- e. Engage Venture Capitalist
- f. Company valuation and assessment
- g. Proposal to launch an IPO

## Our Assets



25 Excavators



150 Tippers



20 Payloaders

## Hazira Rail Terminal



- We are Marketing and Operating Hazira Rail Terminal since 2014-15
- We handle on an average 250 Rakes every Year

## Hazira Jetty

- Two Barge Jetty , 150 Mtrs Length Water Front in Tapti River at 12 NM from Magdhalla Anchorage
- 3.2 Mtrs Draft along side and can handle 2200 DWT Barges
- Annual capacity to handle over 3.2 Million MT of Dry Bulk and Break Bulk Cargo.
- Facility is connected with NH 53 and Rail Siding of DP World (KRIL) having code MKIG
- In 20-21 we handled over 7 Lakh MT of Third Party Cargo on this Jetty



## Pipavav Port



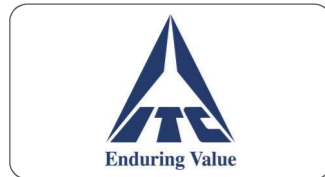
- We handle dry bulk cargo at Pipavav Port from Ship Stevedoring to loading cargo into rakes.
- In Year 20-21 we handled over 1.5 Million MT of cargo

## Jaigarh Port



- We handle full Port Operations for third party cargo at JSW Jaigarh Port, from Ship Stevedoring to Warehouse Management.
- In Year 20-21 we have handled One Million MT of cargo that included Sugar Export, Fertilizer import and import of Minerals

## Trusted Customers



## Diversified Business

Theme Group  
& its Diversified Business



**Theme Infra**  
Development of Prime Residential Plots

**Theme Food | Old School**  
Chain of Restaurants

**Thema Packaging**  
Manufacturing of Woven Sacks

**Theme Logistics**  
Port and Rail Terminal Operator

AC Bus Services for Corporate Clients

## Thema Nutriment and Packaging Pvt Ltd- Dahej



- Spread Over 4 Acres
- Connected with NH 8 and proximity to Gateway ports Mundra, Hazira and Navasheva

- Capacity to Produce 21.6 Million Small Woven Sacks and 1.8 Million FIBC
- Plan to scale up to double capacity by August 2022

## Theme Foods - Old School - Prime Dine Restaurant



Successfully Operating Two Restaurants one each in Vadodara and Ahmedabad. Plan to spread Pan India

## Theme Infra- Bungalow Scheme in Vadodara



## Short Term Goal By October 2021



Year 2021-22 will see ownership of 5 sea going barges to integrate sea and road/rail operations at Hazira. Multimodal in true sense. An investment of over 20 Cr.

## AC Bus Service for Corporate Client



## Business Snapshot

- Multi Modal Logistics Company handles over 6 Million MT of Dry Bulk and Break Bulk cargo
- Thema Nutriment and Packaging produces over 23 Million Woven Sacks and poised to double the capacity in a years time
- Theme Infra, Theme Food and Ac Bus Services have shown vertical Growth
- The Core business of Multimodal Transport generates over 100 Cr of Revenue.
- Diversified business adds over 50 Cr of Revenue
- Business and Revenue growing double digit in last three years
- Leap Jump Planned in next two years time from 21-22.

## Own Barge Unloaders



- Year 21-22 will see addition of 4 Barge Unloaders at Hazira.
- Bringing huge efficiency and capacity utilization of Kribhco Jetty.
- An Investment of over 4.5 Cr

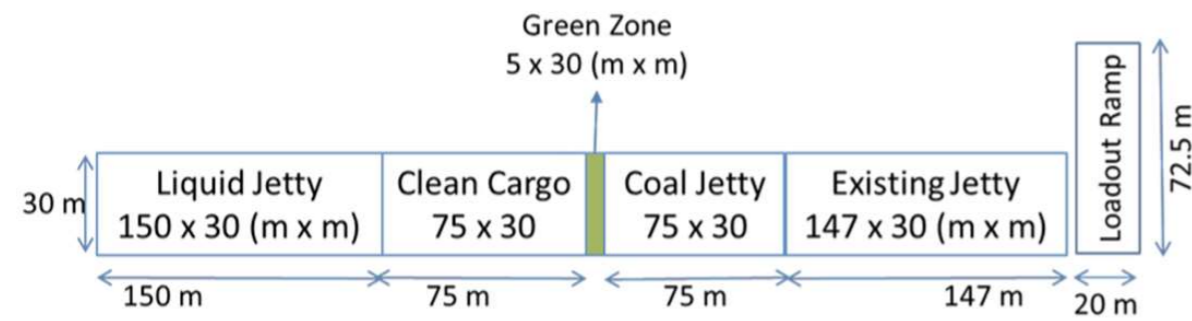
## Cargo Storage Yard



- Development of Third party Cargo Storage Yard at Kribhco Hazira
- Plot size of 40000 Sq Mtrs will be developed in 21-22
- Plot will be developed in line with Policies of GPCB to ensure pollution free storage
- Boon to local Surat Industry who operate hand to mouth for their fuel requirement
- Capital cost envisaged is 5.5 Cr

## Medium Term Goals 3 Years Horizon- Ending March 2024

### Expansion of Kribhco Jetty



- Phase I includes expansion of 155 MTRS that includes Coal and Clean Cargo Jetty
- Total Capital Outlay of INR 79 Cr
- Projected IRR of 16.2%

### Barge Dry Dock and Repair Yard



- Magdala Anchorage has over 25 Barges population to serve GMB Jetty, Kribhco Jetty and also at Essar Bulk Terminal
- Dry Dock of Length 160 Mtrs.
- This facility will be unique in the area to accommodate 2 barges or small ship
- Capital outlay of INR 20 Cr

### Cement Plant



- Clinker Grinding Unit with capacity of One Million MT at Kribhco
- Product Mix of Ordinary Portland Cement, Slag Cement and Composite Cement
- Efficient facility due to low logistics cost of raw material
- Capital outlay of INR 325 Cr.

### Smart Fuel Station



- Smart fueling facility at Kribhco Hazira
- Future built with Electric Charge Station
- Cafeteria and Entertainment Zone
- Capital Outlay of 10 Cr

## Long Term Goals 6 Years Horizon- Ending March 2027

### Vegetable Packaging Plant



- Need of vegetable oil import and its consumption is double digit growth since decades
- Domestic production cannot match and hence reliance on import
- Plan for Facility includes import of refined vegetable oil and packaging unit

### Common Utility- Packing Plant



- Common user facility of packaging food items, like Juices, Pickles, Titbits, Sausages etc
- Packaging facility from sachets, Tetra Packs, Bottling Plant, Drums and Pallets

### Logistics Park

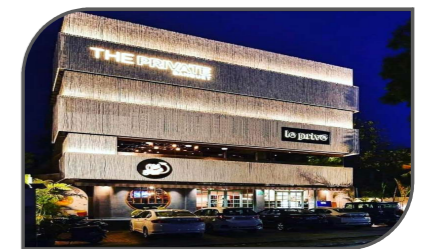
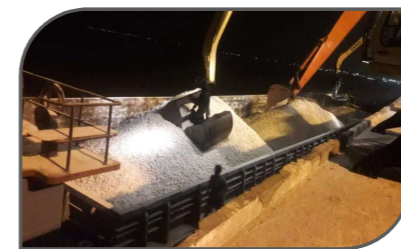


- Kribhco Hazira is best suited for Logistics park
- Facility has best connectivity by Sea, (Kribhco Jetty), Rail Head (Inside Kribhco Premises) and NH 53
- Logistics Park has vast hinterland of North Maharashtra, South and Central Gujarat and lowest Rail Freight for Madhya Pradesh.

# Plan of Going Public



1	Company Consolidation and Assessment By March 2028
2	Engagement of Venture Capitalist By March 2029
3	Credit Rating and Road Shows By September 2029
4	Going Public- IPO By March 2030



Join Hands and Be The Part of  
**Growth Story**

**Thank You!**



Join Hands and Be The Part of  
**Growth Story**  
**Thank You!**

